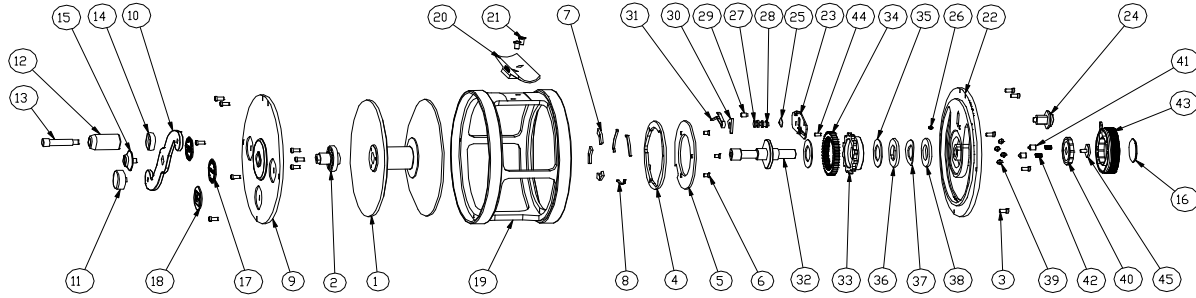


**PARTS LIST FOR HARDY LIGHT SALMON 8/9 / SALMON 10/11**



| No. | Description                     | Q'ty | SAP              |              |
|-----|---------------------------------|------|------------------|--------------|
|     |                                 |      | LIGHT SALMON 8/9 | SALMON 10/11 |
| 1   | DRUM                            | 1    | 1418872          | 1418873      |
| 2   | DRIVING PLATE                   | 1    |                  | 1419281      |
| 3   | SCREW                           | 13   |                  | 1333848      |
| 4   | SELECTOR RING                   | 1    |                  | 1418891      |
| 5   | SELECTOR RING COVER PLATE       | 1    |                  | 1419282      |
| 6   | SELECTOR RING COVER PLATE SCREW | 3    |                  | 1334391      |
| 7   | DOG                             | 3    |                  | 1332588      |
| 8   | DOG SPRING                      | 3    |                  | 1332589      |
| 9   | HANDLEBAR SIDE PLATE            | 1    | 1418880          | 1418881      |
| 10  | HANDLEBAR                       | 1    | 1329121          | 1329123      |
| 11  | COUNTER BALANCE                 | 1    |                  | 1334499      |
| 12  | HANDLE KNOB                     | 1    |                  | 1410485      |
| 13  | HANDLE WIRE                     | 1    |                  | 1334238      |
| 14  | HANDLE CUP                      | 1    |                  | 1332775      |
| 15  | HANDLE BAR SCREW                | 1    |                  | 1334500      |
| 16  | NAME BADGE                      | 2    | 1418889          | 1418890      |
| 17  | REELMAKER BADGE                 | 1    |                  | 1418666      |
| 18  | CASTLE & FLY BADGE              | 1    |                  | 1418665      |
| 19  | FRAME                           | 1    | 1418884          | 1418885      |
| 20  | REELBACK                        | 1    |                  | 1333542      |
| 21  | REELBACK SCREW                  | 2    |                  | 1333855      |
| 22  | REGULATOR SIDE PLATE            | 1    | 1418876          | 1418877      |
| 23  | OPTIONAL CHECK PLATE            | 1    |                  | 1332558      |
| 24  | OPTIONAL CHECK BUTTON           | 1    |                  | 1418887      |
| 25  | TONGUE STUD WASHER              | 1    |                  | 1333853      |
| 26  | 3/32" STAINLESS STEEL BALL      | 1    |                  | 1333916      |
| 27  | TONGUE STUD                     | 1    |                  | 1418893      |
| 28  | SPRING STUD                     | 1    |                  | 1418894      |
| 29  | STOP STUD                       | 1    |                  | 1418895      |
| 30  | TONGUE                          | 1    |                  | 1333846      |
| 31  | CHECK SPRING                    | 1    |                  | 1333568      |
| 32  | SPINDLE                         | 1    |                  | 1418896      |
| 33  | CLUTCH BODY                     | 1    |                  | 1418897      |
| 34  | CHECK WHEEL                     | 1    |                  | 1334282      |
| 35  | RULON PAD                       | 2    |                  | 1334394      |
| 36  | KEYED WASHER                    | 1    |                  | 1334396      |
| 37  | WAVE SPRING                     | 1    |                  | 1334397      |
| 38  | PUSH PLATE                      | 1    |                  | 1334420      |
| 39  | 1/8" STAINLESS STEEL BALL       | 4    |                  | 1333860      |
| 40  | REGULATOR BUTTON INSERT         | 1    |                  | 1418898      |
| 41  | DETENT PLUNGER                  | 2    |                  | 1418899      |
| 42  | PLUNGER SPRING                  | 2    |                  | 1334457      |
| 43  | REGULATOR BUTTON                | 1    |                  | 1418888      |
| 44  | SPINDLE DOWEL PIN               | 1    |                  | 1333844      |
| 45  | STOP SCREW                      | 1    |                  | 1333847      |

Reel Part Numbers: CASCAPEDIA LIGHT SALMON 8/9: 1420676  
 CASCAPEDIA SALMON 10/11: 1420677